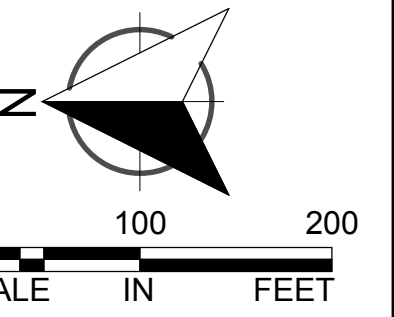
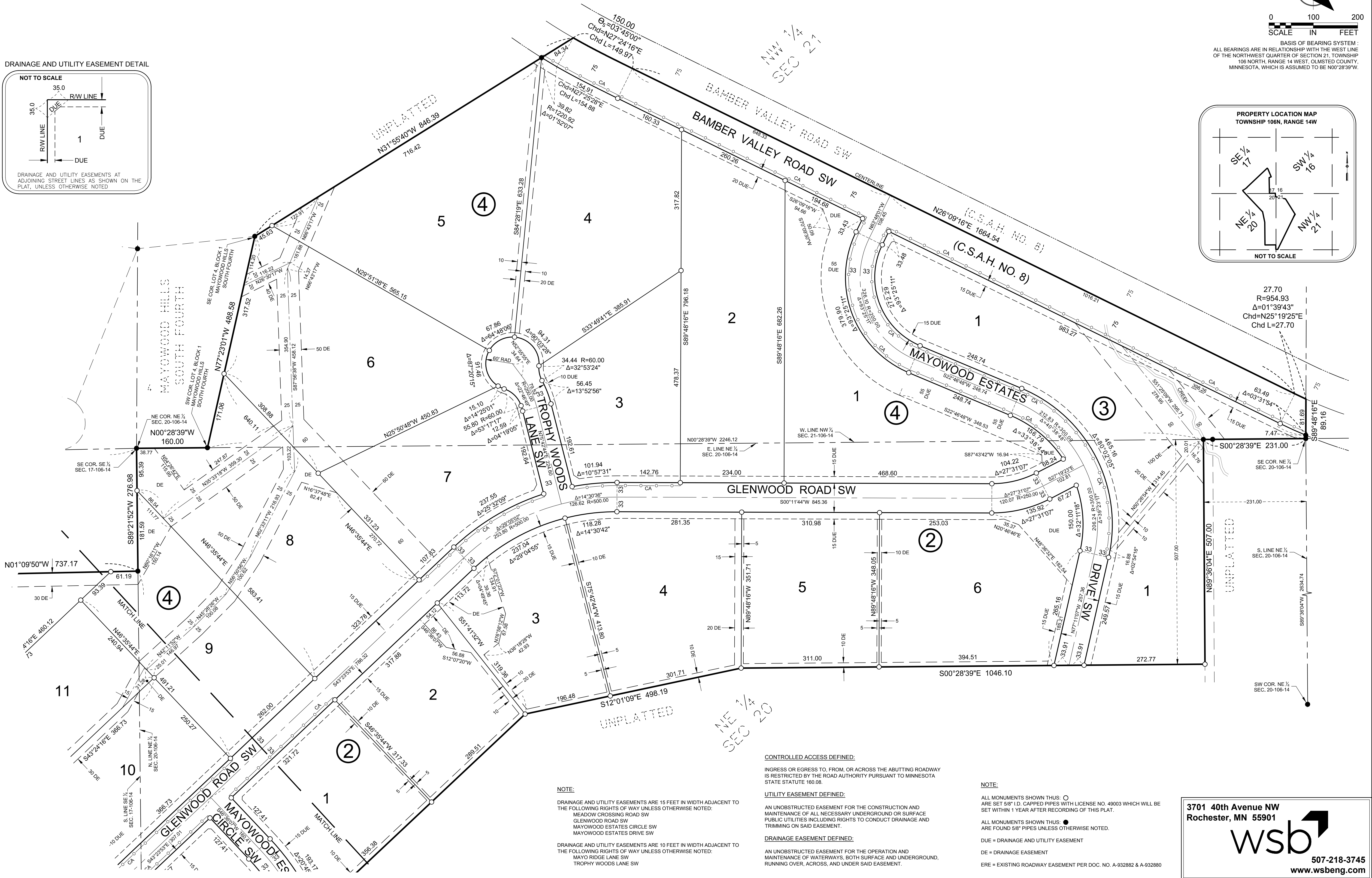
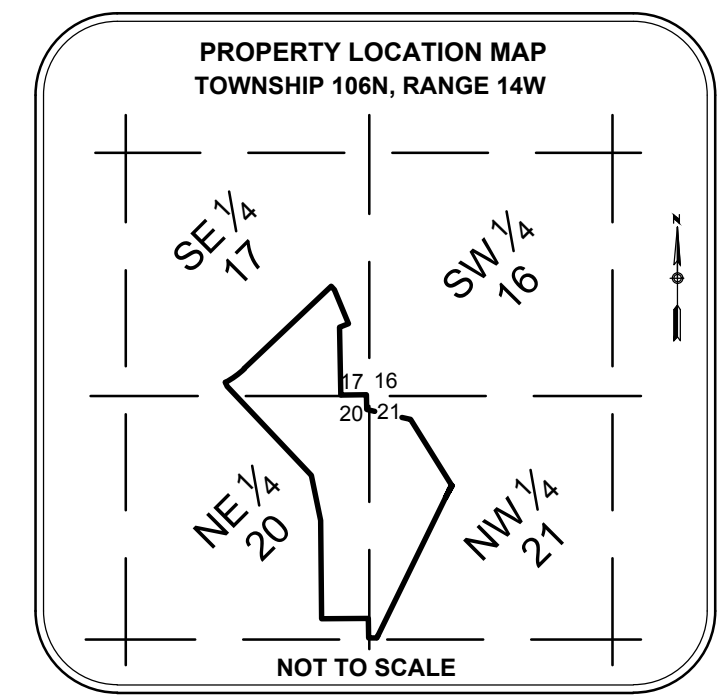
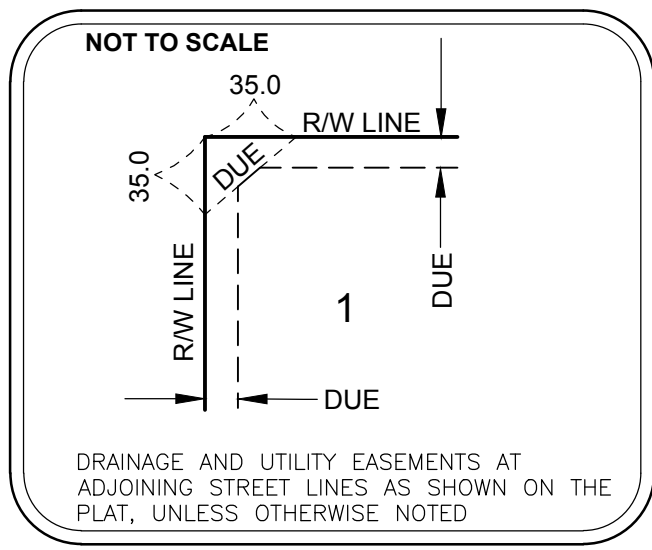


MAYOWOOD ESTATES



BASIS OF BEARING SYSTEM:
ALL BEARINGS ARE IN RELATIONSHIP WITH THE WEST LINE
OF THE NORTHWEST QUARTER OF SECTION 21, TOWNSHIP
106 NORTH, RANGE 14 WEST, OLMSTED COUNTY,
MINNESOTA, WHICH IS ASSUMED TO BE N00°28'39"W.

DRAINAGE AND UTILITY EASEMENT DETAIL



NOTE:
DRAINAGE AND UTILITY EASEMENTS ARE 15 FEET IN WIDTH ADJACENT TO THE FOLLOWING RIGHTS OF WAY UNLESS OTHERWISE NOTED:
MEADOW CROSSING ROAD SW
GLENWOOD ROAD SW
MAYOWOOD ESTATES CIRCLE SW
MAYOWOOD ESTATES DRIVE SW

DRAINAGE AND UTILITY EASEMENTS ARE 10 FEET IN WIDTH ADJACENT TO THE FOLLOWING RIGHTS OF WAY UNLESS OTHERWISE NOTED:
MAYO RIDGE LANE SW
TROPHY WOODS LANE SW

CONTROLLED ACCESS DEFINED:
INGRESS OR EGRESS TO, FROM, OR ACROSS THE ABUTTING ROADWAY IS RESTRICTED BY THE ROAD AUTHORITY PURSUANT TO MINNESOTA STATE STATUTE 160.08.

UTILITY EASEMENT DEFINED:
AN UNOBSTRUCTED EASEMENT FOR THE CONSTRUCTION AND MAINTENANCE OF ALL NECESSARY UNDERGROUND OR SURFACE PUBLIC UTILITIES INCLUDING RIGHTS TO CONDUCT DRAINAGE AND TRIMMING ON SAID EASEMENT.

DRAINAGE EASEMENT DEFINED:
AN UNOBSTRUCTED EASEMENT FOR THE OPERATION AND MAINTENANCE OF WATERWAYS, BOTH SURFACE AND UNDERGROUND, RUNNING OVER, ACROSS, AND UNDER SAID EASEMENT.

NOTE:
ALL MONUMENTS SHOWN THUS: ○
ARE SET 5/8" I.D. CAPPED PIPES WITH LICENSE NO. 49003 WHICH WILL BE SET WITHIN 1 YEAR AFTER RECORDING OF THIS PLAT.

ALL MONUMENTS SHOWN THUS: ●
ARE FOUND 5/8" PIPES UNLESS OTHERWISE NOTED.

DUE = DRAINAGE AND UTILITY EASEMENT
DE = DRAINAGE EASEMENT
ERE = EXISTING ROADWAY EASEMENT PER DOC. NO. A-932882 & A-932880

3701 40th Avenue NW
Rochester, MN 55901

507-218-3745
www.ws beng.com